



” ”

**2010**

**2010/3/31 - 1/1**

**2010**



2010/03/31 2010/01/01

•

: \_\_\_\_\_

: \_\_\_\_\_

.1

.2

2010

2010/3/31-1/1

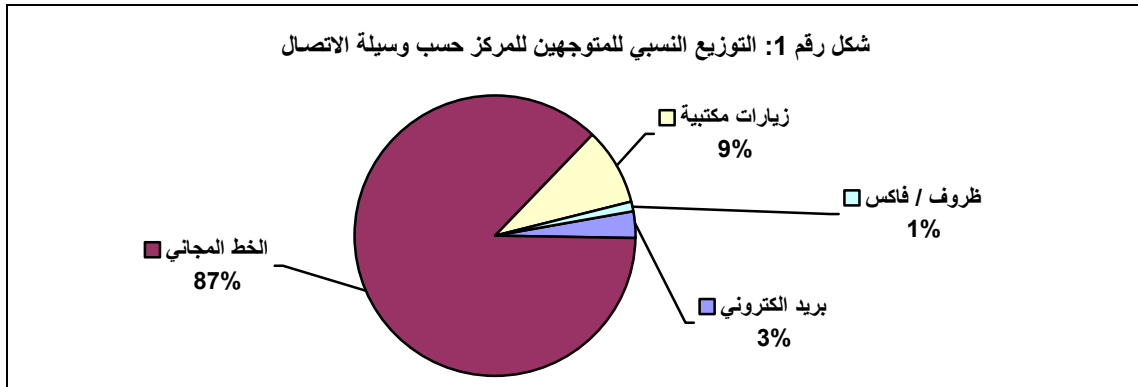
342 2010

%87

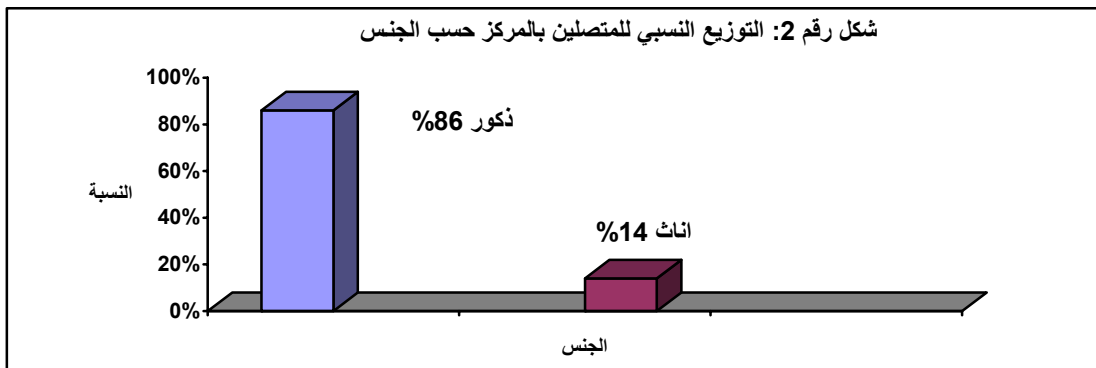
%9

.%1

%3



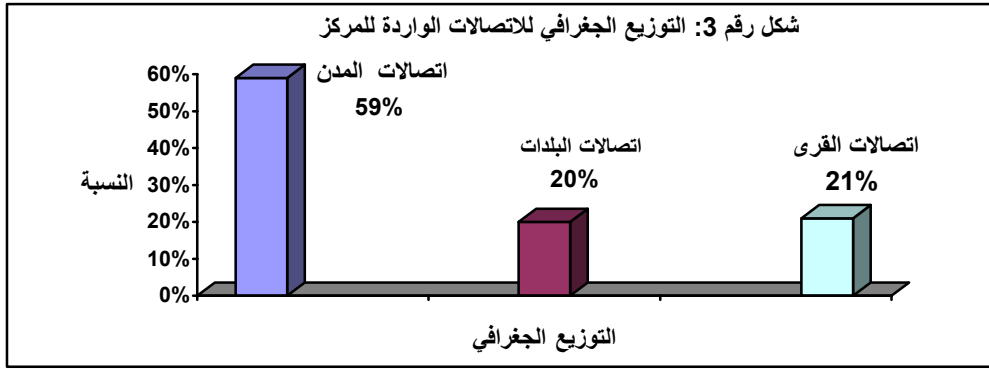
%14.1 : %85.9



1

%59  
 .%21  
 %20  
 .2009

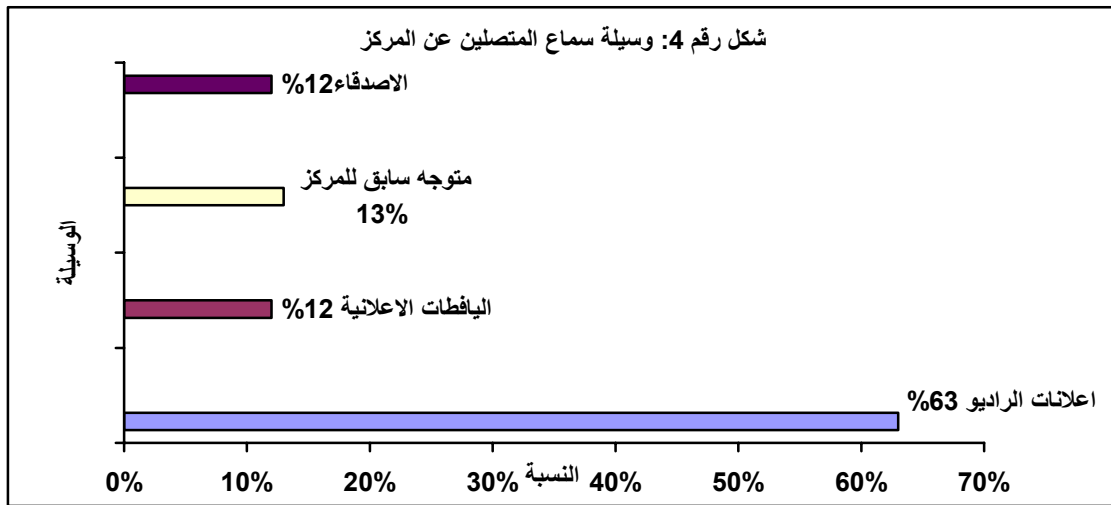
:



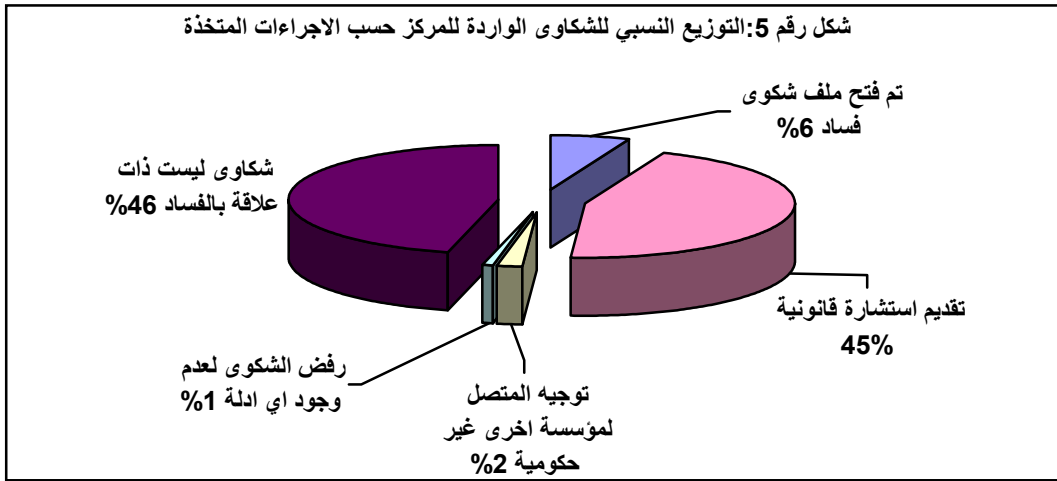
:

%12  
 %12  
 %63  
 %13

:



<sup>1</sup> الاتصالات الواردة للمركز المقصود فيها الاتصال عن طريق التلفون او الزيارات المكتتبية او ارسال فاكس او البريد الالكتروني.



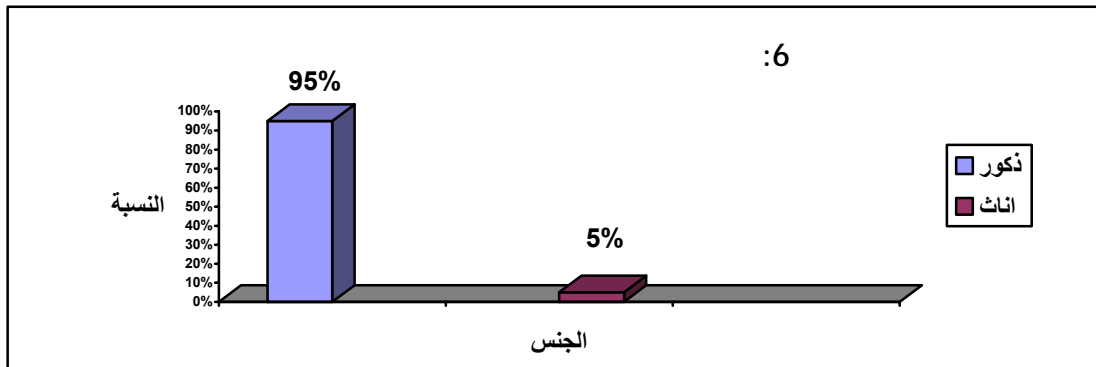
2010

%6

20

20

19



60-50

50-40

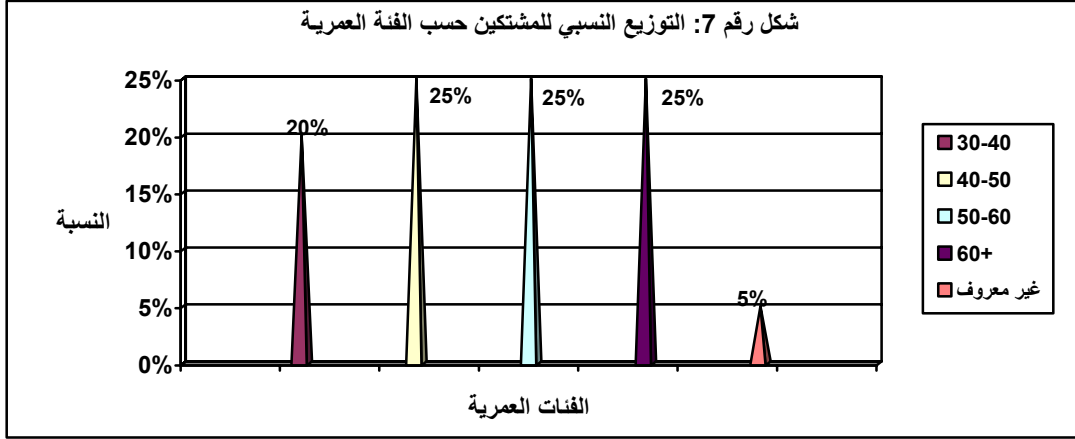
%25

+60

40 — 30

%5

%20

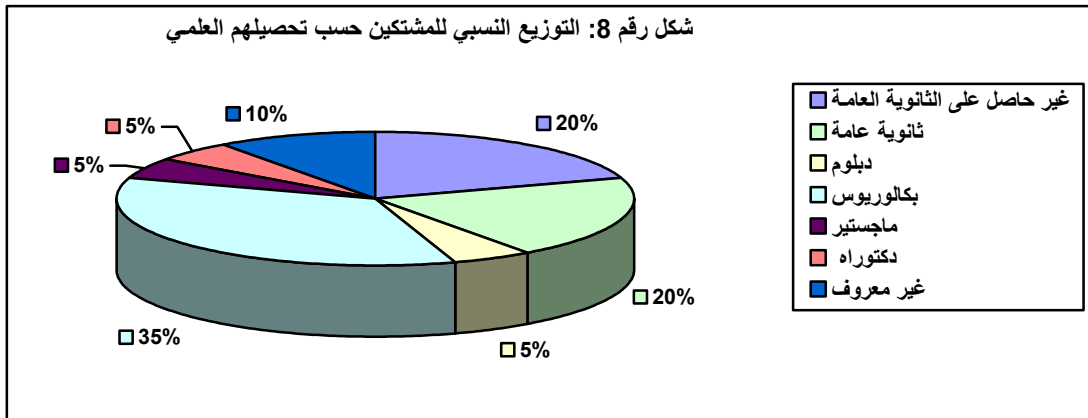


2010 : %20

%20

%5

%35

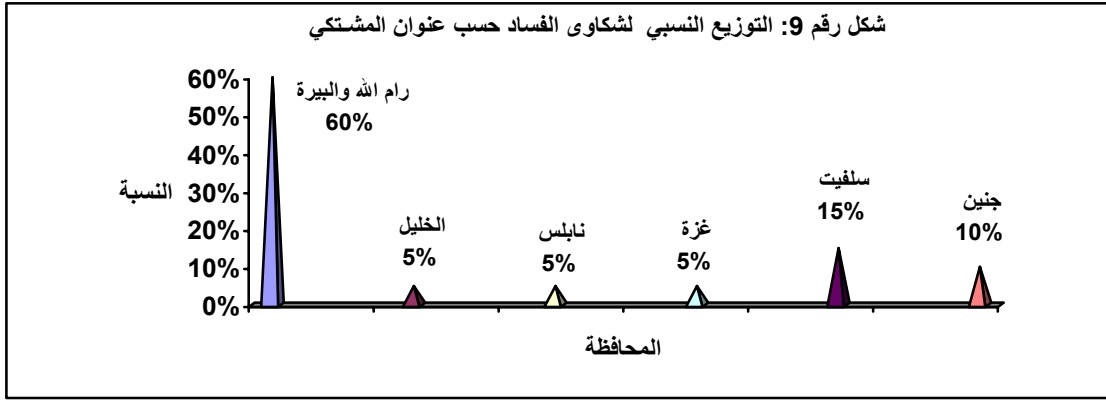


2010

%60

.%10

%5



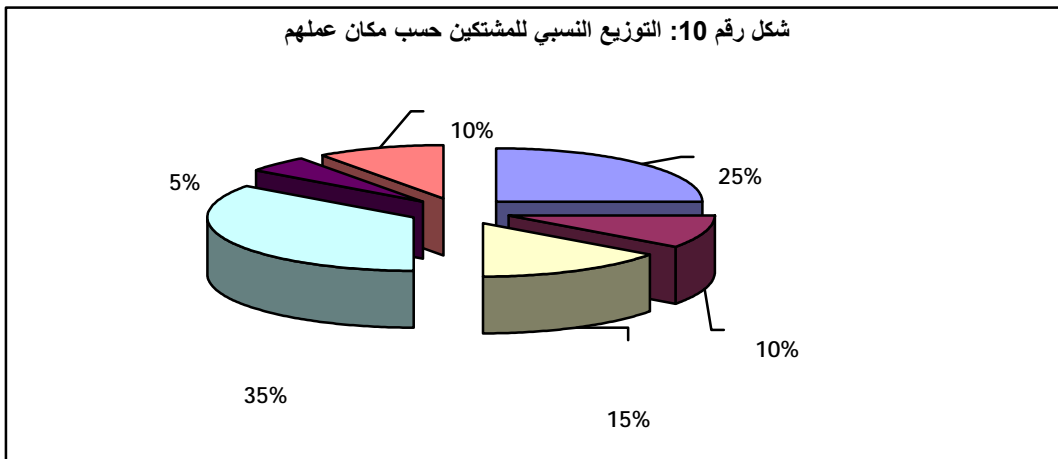
%35

%15

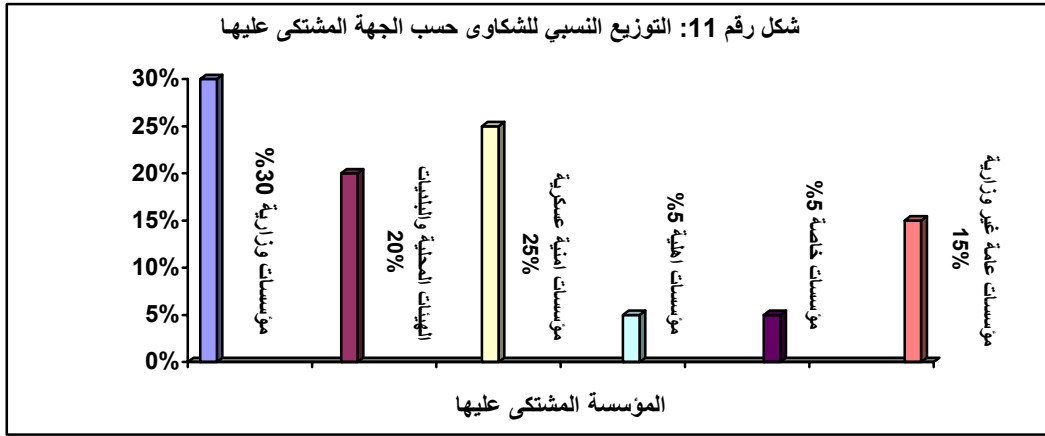
%25

%10

.%5



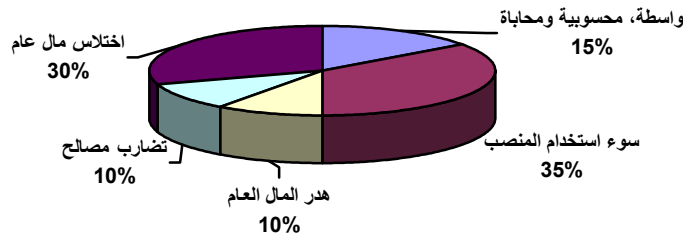
5 %25 2010 6 %30
   
 %20
   
 %15 3
   
 %5



: 2010

%35 %30
   
 %15
   
 %10

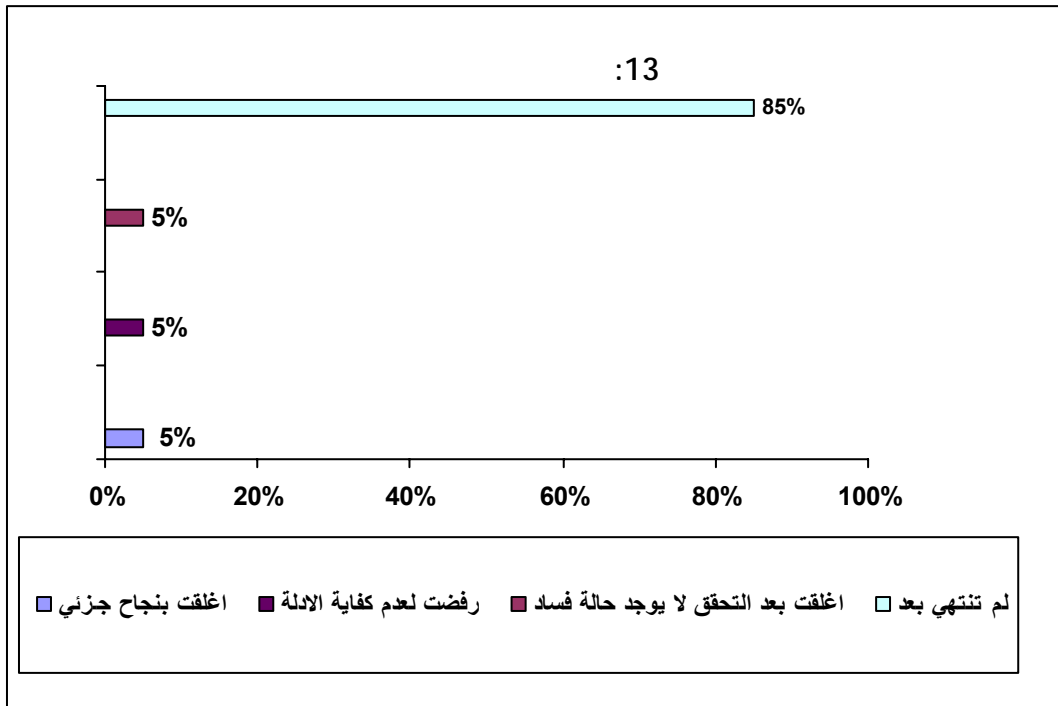
شكل رقم 12: انواع الفساد الواردة في الشكاوى حسب ادعاء المشتكين



%5

.%5

%85





.1

.2

.3

.4